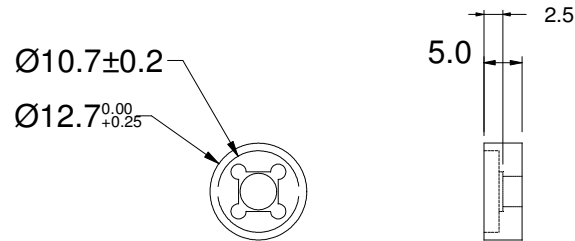



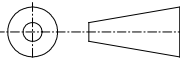
# Etalon Mount, 5 x 5mm

REVISIONS			
REV	REVISED PER	Date	Approved
A	first release	2009 November 3	JHH
B	cn 1657	2009 December 3	JHH
C	CN 2852	2014 December 23	JHH



Notes:

1.  Typical 5 x 5mm etalon, actual size

<b>LightMachinery OP-4353</b>	
dimensions mm	material: Aluminum
<b>Scale 10:1</b>	
<b>Tolerances (unless otherwise noted)</b> X $\pm 0.5$ A $\pm 1^\circ$ X.X $\pm 0.1$ A.A $\pm 0.1^\circ$ X.XX $\pm 0.025$	
Drawing Template QT-730-002-C	
Third angle projection 	
This design and print is the property of LightMachinery, Inc., and shall not be used as the basis for the manufacture or sale of apparatus without the written permission of LightMachinery, Inc.	