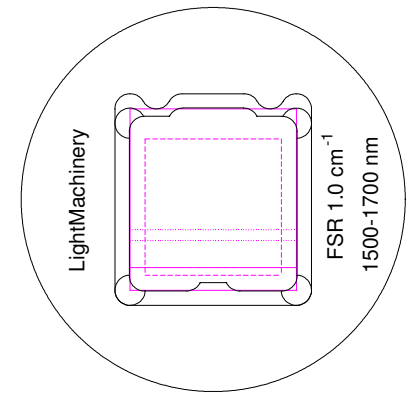
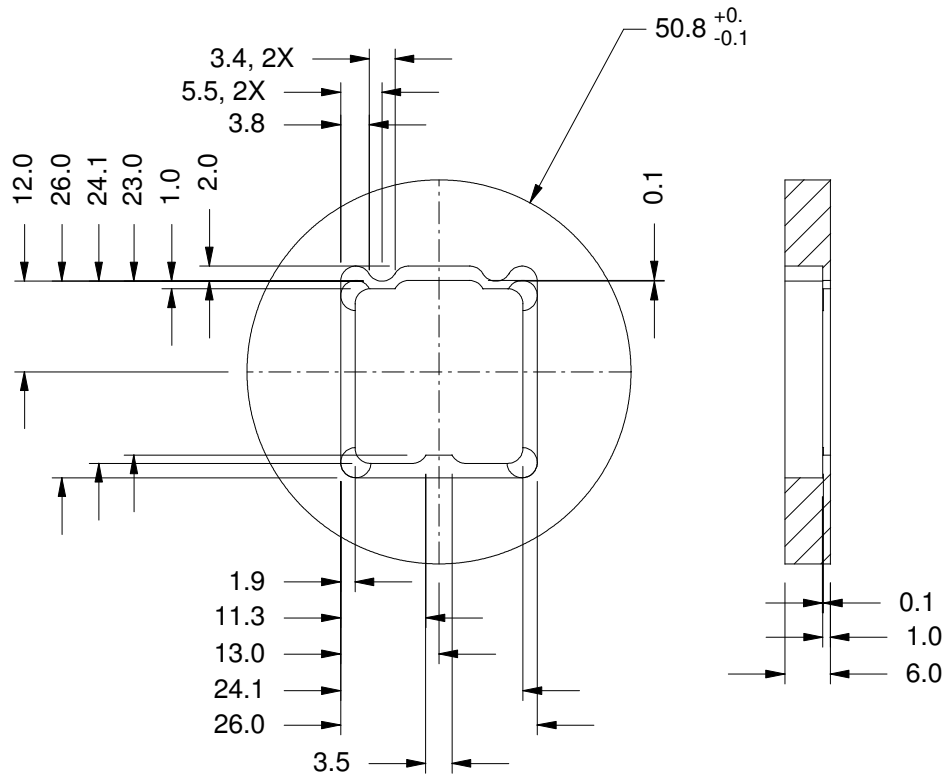


REVISIONS			
REV	REVISED PER	Date	Approved
A	first release	2014 May 30	IJM



Mounted VIPA

Notes:

1. All radii, 2 mm.
2. Corner relief spots at corners 0.1 deep.
3. Break sharp edges.
4. Black anodize.
5. Before mounting OP-6721-xxxx-y, mark surface with LightMachinery, and appropriate FSR and wavelength values as in the example.

VIPA mount		material: aluminum	
LightMachinery OP-7343		Scale 1:1	
dimensions mm		Third angle projection	
Tolerances (unless otherwise noted)			
X	±0.5	A	±1°
X.X	±0.1	A.A	±0.1°
X.XX	±0.025	Drawing Template QT-730-002-E	
<p>This design and print is the property of LightMachinery, Inc., and shall not be used as the basis for the manufacture or sale of apparatus without the written permission of LightMachinery, Inc.</p>			